

# DATA SHEET

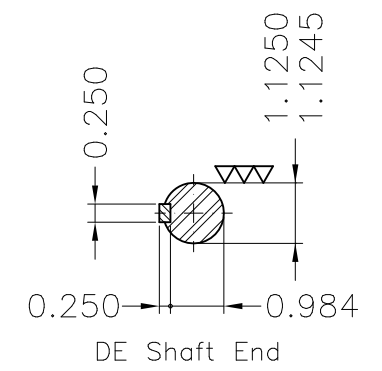
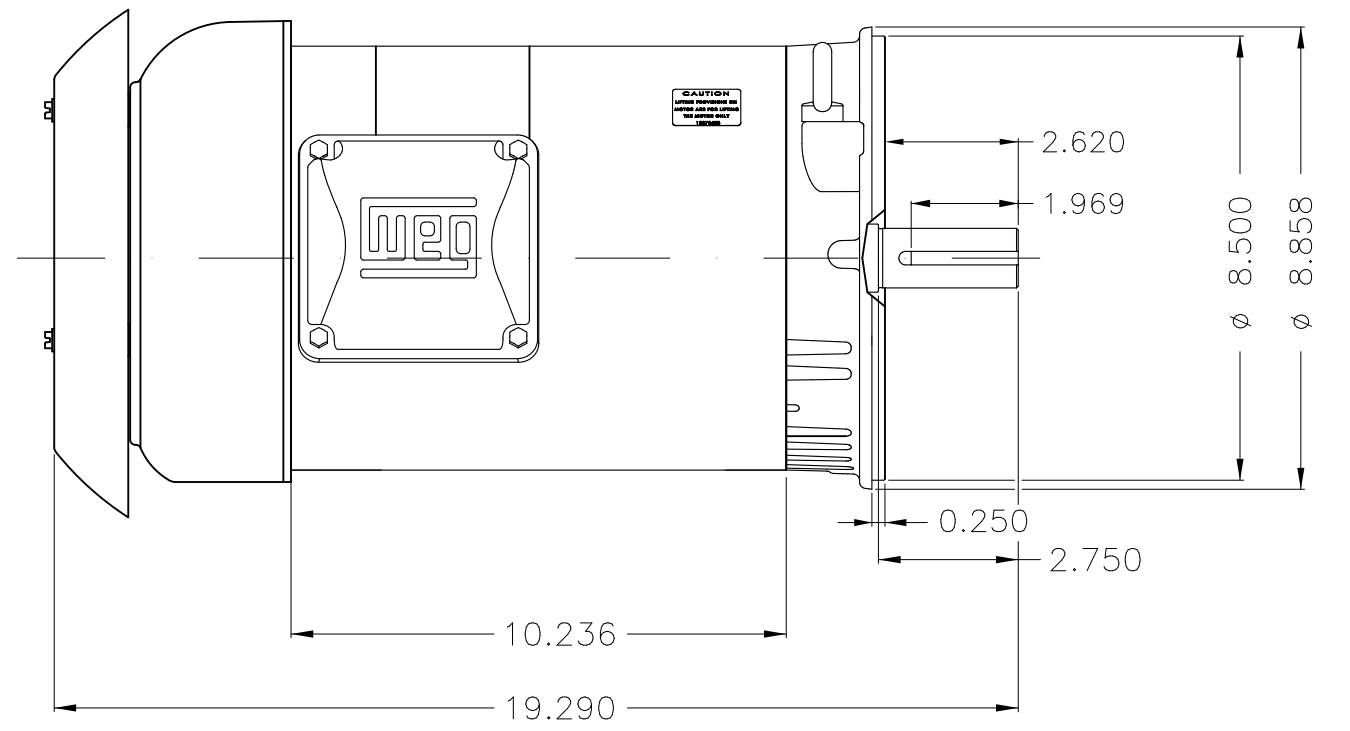
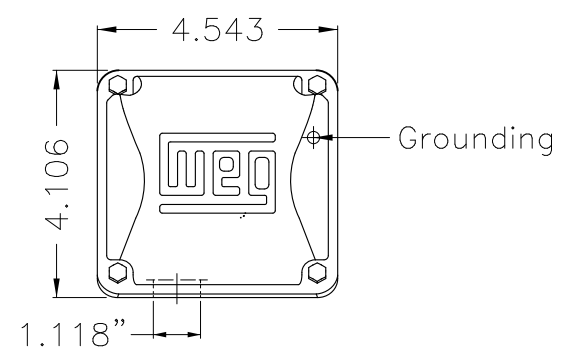
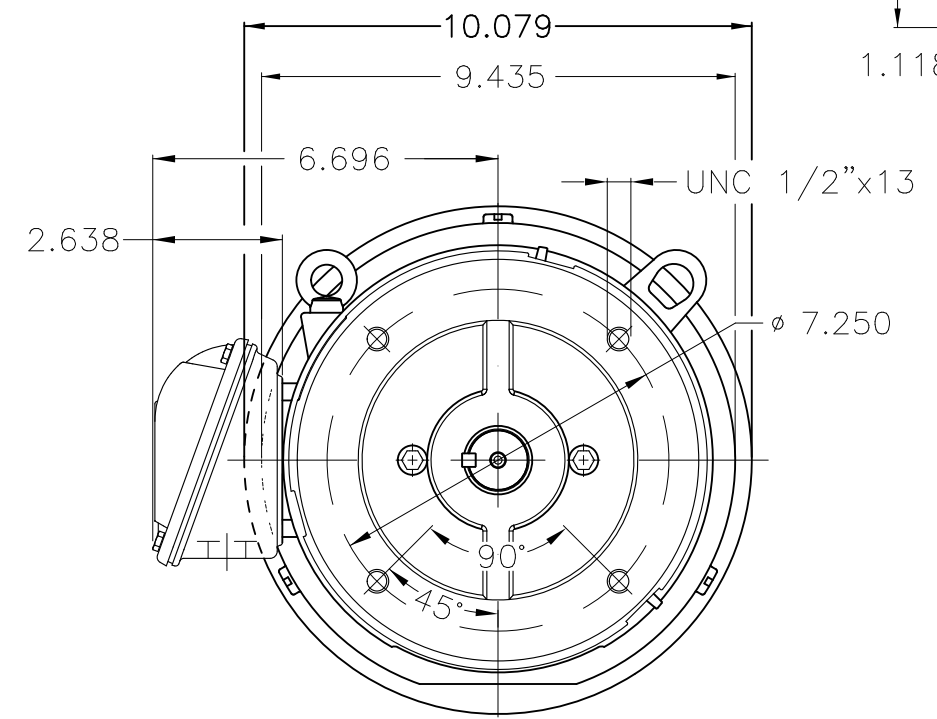


## Three Phase Induction Motor - Squirrel Cage

Customer		: Galco Industrial Electronics			
Product line		: Rolled Steel NEMA Premium Efficiency Three-Phase		Product code : 12677335	
				Catalog # : 00518ET3ER184TC-S	
Frame		: 182/4TC		Locked rotor time	
Output		: 5 HP (3.7 kW)		: 28s (cold) 16s (hot)	
Poles		: 4		Temperature rise	
Frequency		: 60 Hz		: 80 K	
Rated voltage		: 230/460 V		Duty cycle	
Rated current		: 13.0/6.49 A		: Cont.(S1)	
L. R. Amperes		: 90.9/45.4 A		Ambient temperature	
LRC		: 7.0x(Code J)		: -20°C to +40°C	
No load current		: 6.89/3.44 A		Altitude	
Rated speed		: 1750 rpm		: 1000 m.a.s.l.	
Slip		: 2.78 %		Protection degree	
Rated torque		: 2.07 kgfm		: IP55	
Locked rotor torque		: 220 %		Cooling method	
Breakdown torque		: 300 %		: IC411 - TEFC	
Insulation class		: F		Mounting	
Service factor		: 1.15		: W-6	
Moment of inertia (J)		: 0.0130 kgm <sup>2</sup>		Rotation <sup>1</sup>	
Design		: B		: Both (CW and CCW)	
				Noise level <sup>2</sup>	
				: 56.0 dB(A)	
				Starting method	
				: Direct On Line	
				Approx. weight <sup>3</sup>	
				: 39.4 kg	
Output		25%	50%	75%	100%
Efficiency (%)		88.2	88.5	89.5	89.5
Power Factor		0.35	0.60	0.73	0.80
		Foundation loads			
		Max. traction : 118 kgf			
		Max. compression : 157 kgf			
		<u>Drive end</u>		<u>Non drive end</u>	
Bearing type		: 6206 ZZ		: 6205 ZZ	
Sealing		: V'Ring		: V'Ring	
Lubrication interval		: -		: -	
Lubricant amount		: -		: -	
Lubricant type		: Mobil Polyrex EM			
Notes					
USABLE @208V 14.4A SF 1.00 SFA 14.4A					
This revision replaces and cancel the previous one, which must be eliminated.			These are average values based on tests with sinusoidal power supply, subject to the tolerances stipulated in NEMA MG-1.		
(1) Looking the motor from the shaft end.					
(2) Measured at 1m and with tolerance of +3dB(A).					
(3) Approximate weight subject to changes after manufacturing process.					
(4) At 100% of full load.					
Rev.	Changes Summary			Performed	Checked
Performed by				Page	
Checked by				Revision	
Date	21/08/2020			1 / 1	

Dimensões em polegada  
Dimensions in inches

THIS IS AN UPDATED REVISION, THE  
PREVIOUS ONE MUST BE DISREGARDED.



Color Munsell N 1 matte black  
Painting plan 207N  
Mounting W-6/V18R(D)

ECM	LOC	SUMMARY OF MODIFICATIONS	EXECUTED	CHECKED	RELEASED	DATE	VER
EXECUTED	USERADMIN	THREE P. MOTOR CLOS ROLLED STEEL NEMA PREM					
CHECKED		FRAME 182/4TC IP55 TEFC					
RELEASED		WEG code: 12677335					
REL DT	21.08.2020	WMO Jaragua do Sul	Product Engineering	SHEET	1 / 1		

5 HP 04 Poles 60Hz

A





**NEMA**  
**Premium**



3PT9  
C US LISTED  
FOR SAFE AREA



Energy Verified

MADE IN MEXICO

**MAT: 12677335 CC029A**

**W01.TE0IC0X0N**

**MODEL 00518ET3ER184TC-S**

**22MAI2020 S/N:**

**For 60Hz: Class I, Zone 2, IIC**  
**Class I, Div.2, Gr. A,B,C,D - T3**

**Div 2 Inverter Duty (SF1.00)**  
**CT 2:1/MT 1000:1**

<b>PH 3</b>	<b>FR</b>	<b>182/4TC</b>	<b>HP(KW)</b>	<b>5.0(3.7)</b>	<b>Hz</b>	<b>60</b>
<b>V</b>	<b>230/460</b>		<b>RPM</b>	<b>1750</b>		
<b>A</b>	<b>13.0/6.49</b>		<b>DUTY CONT.</b>			

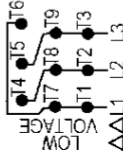
<b>SFA</b>	<b>14.9/7.46</b>		<b>CODE J</b>	<b>DES B</b>	<b>IP55</b>			
<b>SF</b>	<b>1.15</b>	<b>INS CL F</b>	<b>AT</b>	<b>80K</b>	<b>AMB</b>	<b>40°C</b>	<b>ENCL</b>	<b>TEFC</b>

**PF 0.80** **NEMA NOM.EFF. 89.5%**

**ALT 1000 m.a.s.l. USABLE @ 208V 14.4A SF1.00**

**ALTERNATE RATING: 5.0HP 50Hz 190-220/380-415V SF1.00**

**15.8-14.1/7.88-7.47A 1425RPM EFF 84.9% (IE1) IEC 60034-1**



T1-BLU	T2-WHT
T3-ORG	T4-YEL
T5-BLK	T6-GRY
T7-PNK	T8-RED
T9-BRK RED	

ΔΔL1	L2	L3	
Δ	L1	L2	L3

**INTERCHANGE ANY TWO LINE WIRES TO REVERSE THE ROTATION**

**For safe area-inverter duty motor For 60Hz use on VPWM 1000:1 VT, 4:1 CT**

**DE: 6206-ZZ ODE: 6205-ZZ MOBIL POLYREX EM**

**WARNING: Motor must be grounded in accordance with local and national electrical codes to prevent serious electrical shocks. Disconnect power source before servicing unit.**

**AVERTISSEMENT: Le moteur doit être mis à la terre conformément aux codes électriques locaux et nationaux afin d'éviter tout choc électrique grave. Déconnectez l'alimentation avant l'entretien de la machine.**

